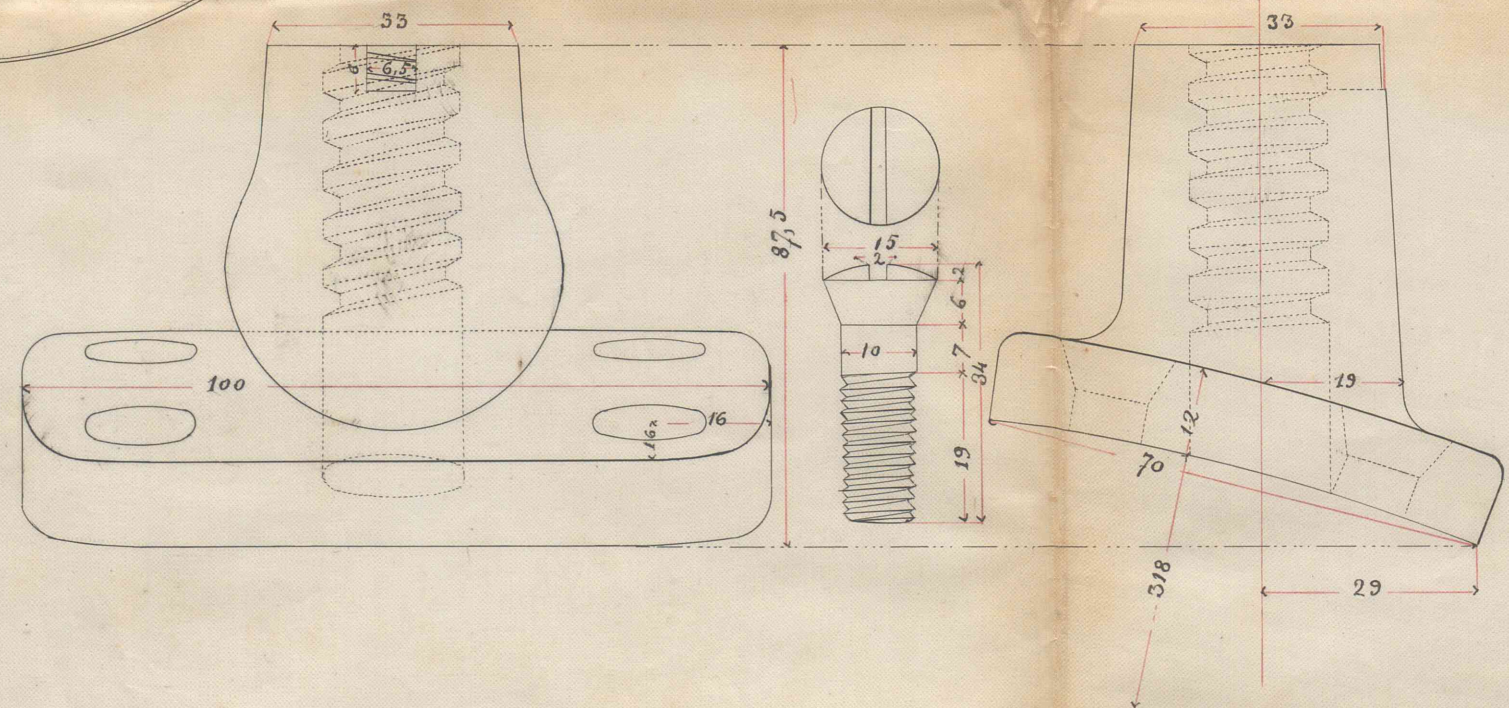
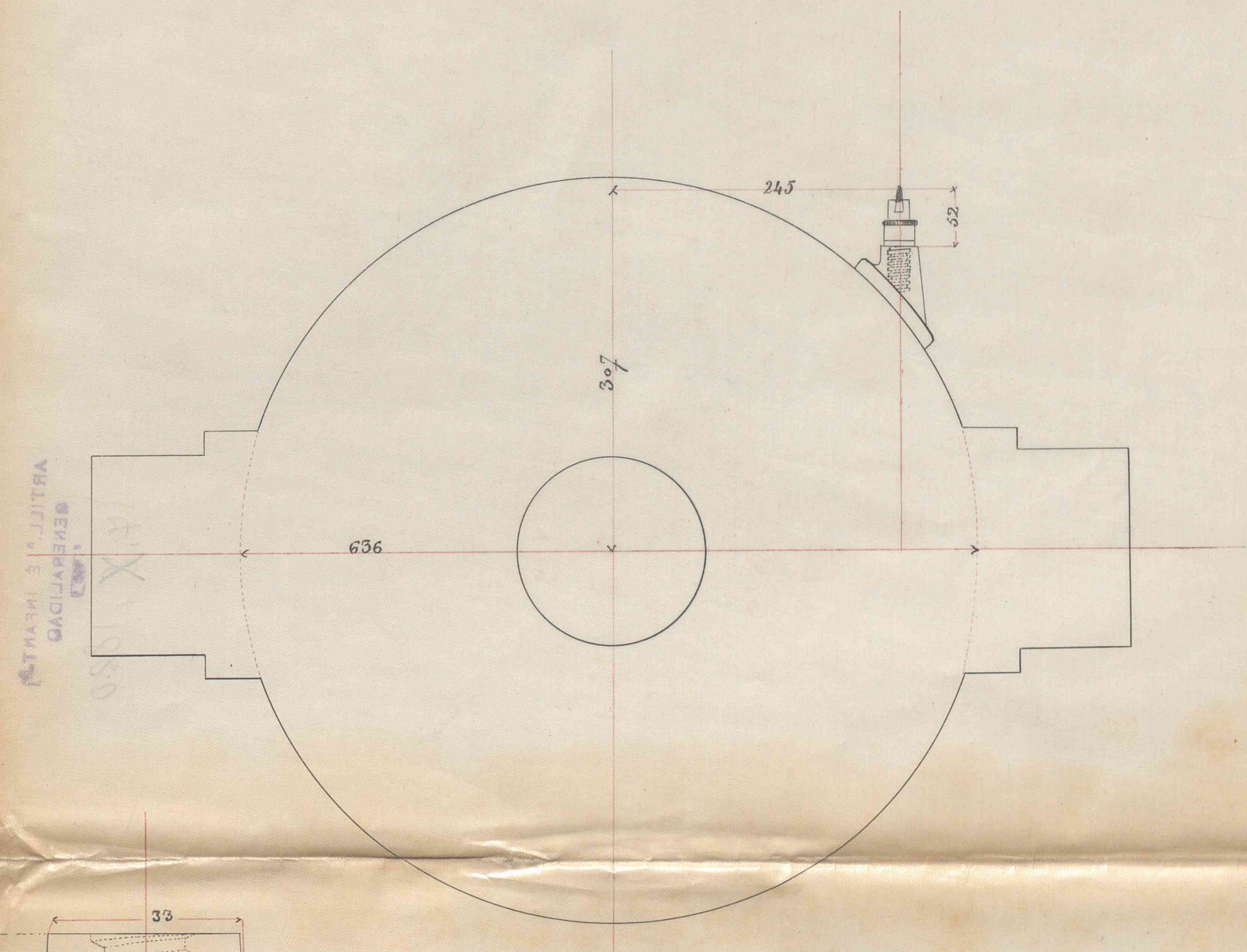
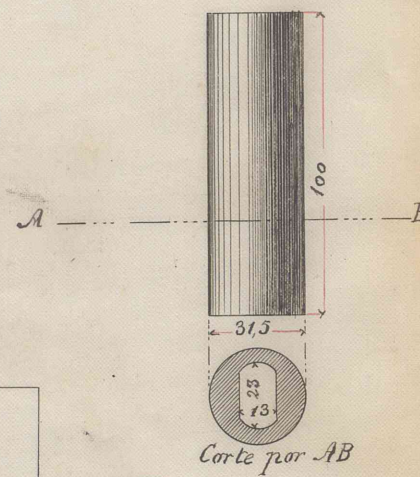
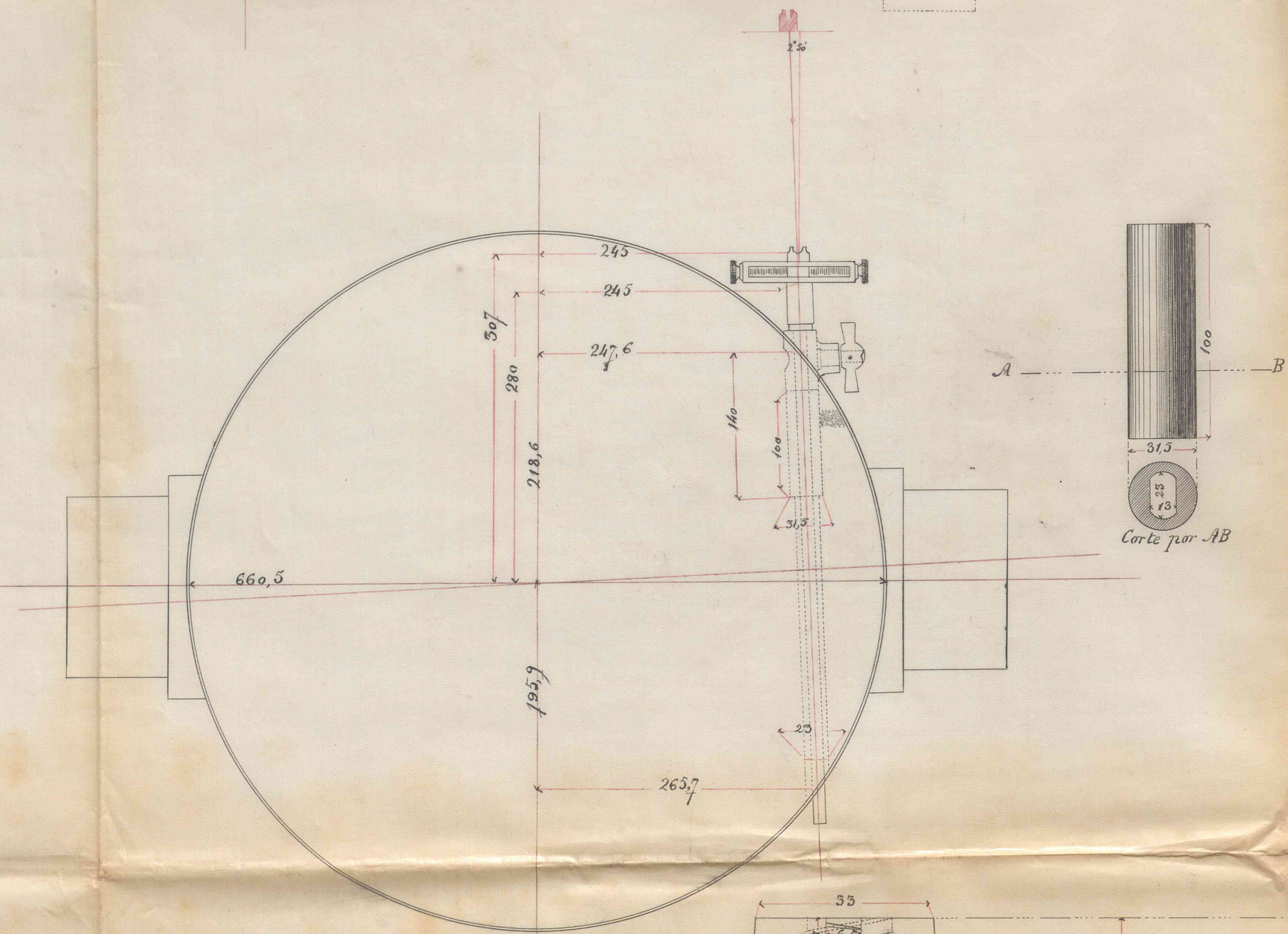
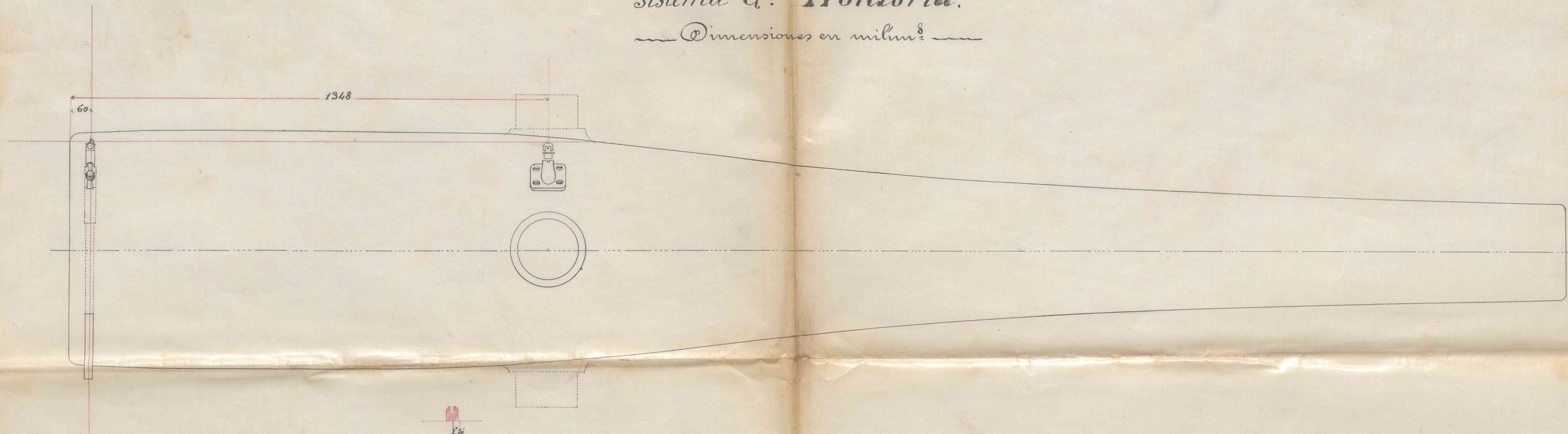


*Instalacion del Alza y punto de mira en el Cañon de 16<sup>m</sup>. nuevo modelo, rayado y á cargar por la culata sistema G<sup>z</sup> Hontoria.*

*Dimensiones en milim<sup>8</sup>*



V.<sup>o</sup> B.<sup>o</sup>

*El Brigadier Presidente.*

*San Fernando 30 Setiembre de 1880.*

*El Ten.<sup>o</sup> Coronel Secretario.*